

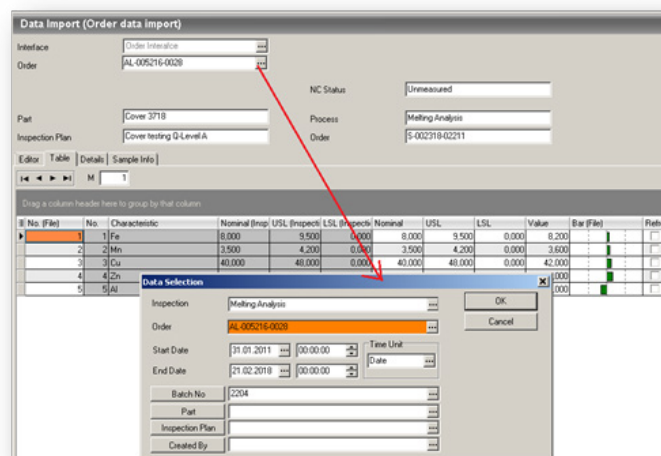
## ORDER INTERFACE

The Order Interface tool enables additional functionality to use existing QDA measurement data to streamline redundant processes and reduce errors. For example, the measurement results from a primary product (which is used in several production orders) can be added to the respective end product, reducing time spent to reenter this data. This allows the specific production order to use not only the data of the final product, but also the results from the incoming inspection.

Use the tool to pair parts from the incoming inspection or pre-production stages into a final product. By comparing these parts against the specification of the finished part it is easy to avoid or minimize necessary modifications and rejects.

The Order Interface tool can also be used in the creation of certificates. The tool is especially helpful when specific information which is needed in the inspection order is different from the certificates. The tool removes redundant data entry by applying measurement results to multiple inspection orders with simple interfacing. This applies to results from the incoming inspection, as well as, for material analysis, laboratory inspection or simply for the documentation of products in each truck delivery.

The data to be imported can be selectively restricted by date and time filters, as well as, sample information. This functionality requires that all measurement data is in one database.



**ARTICLE NUMBER:** QDA-T-OI

### OTHER AVAILABLE INTERFACES

Additional interfaces are available, including OPC, MES or ERP. There are several inspection interfaces that allow the import of file-based results. The available interfaces are:

Cats (mes), Cats (mdf), CSV, CSV (characteristics column by column), InfraTec, DEA, DMIS, QDA ASCII, Draeger, Edixia, ELISA, Faro CS, HOLOS, Inca3D, Inspection-File, IQ Pro, IQ Pro2, Karthe, Leica, Leitz/Quindos, LK, LMI, Metrologic, Mora, Perceptron FTP, PLA, QML, qs-STAT 3.0, qs-STAT 2.5, QS-Torque, Stiefelmayer, GEO2000, Calypso (Kompakt), Zeiss UMESS, Wenzel/Metromec, Zett-Mess, Calypso (\*.chr).